

PRODUCT INFORMATION PACKET



Model No: B625
Catalog No: B625

Pool Pump Motor, 3/4 HP, 1 Ph, 60 Hz, 230/115 V, 3600 RPM, N56CZ Frame, DP



Regal and Century are trademarks of Regal Rexnord Corporation or one of its affiliated companies.
©2022 Regal Rexnord Corporation, All Rights Reserved. MC017097E





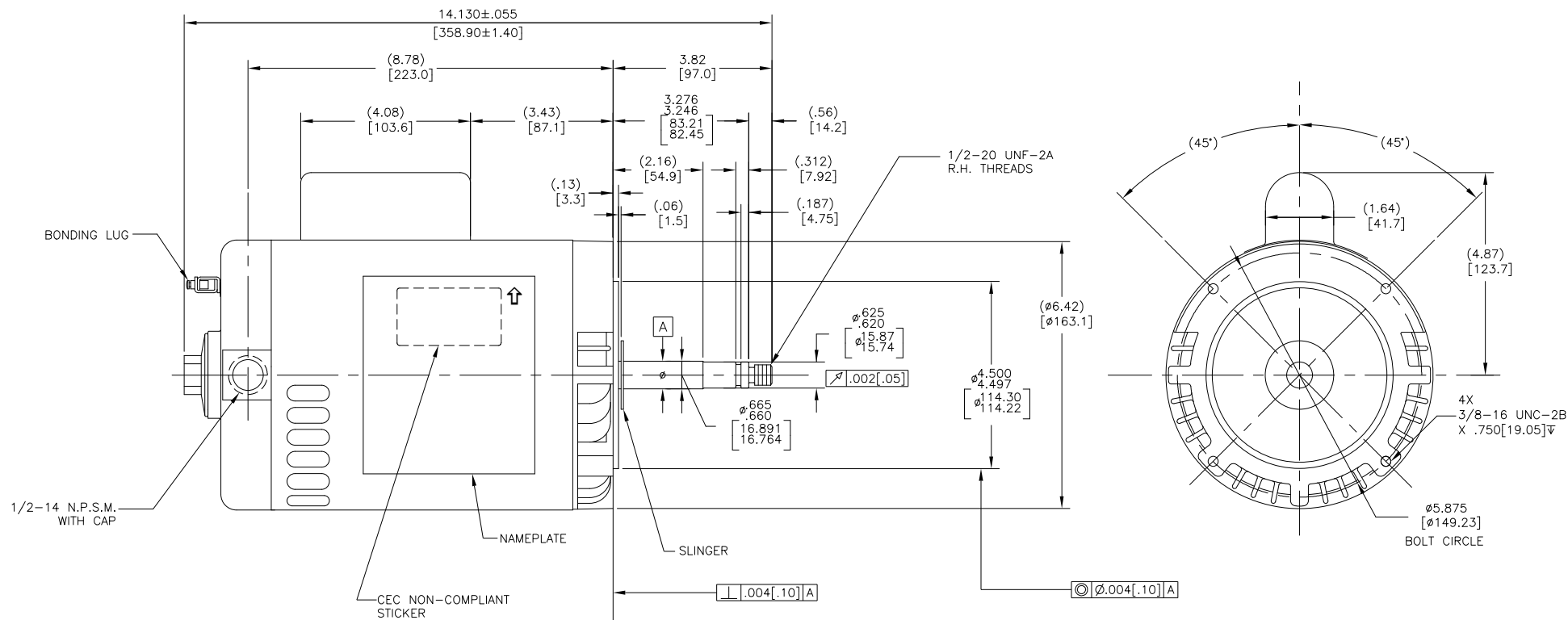
Nameplate Specifications

Output HP	3/4 Hp	Output KW	0.56 kW
Frequency	60 Hz	Voltage	230/115 V
Current	SF 6.4/12.8 A	Speed	3450 rpm
Service Factor	1.5	Phase	1
Duty	Continuous	Insulation Class	B
Frame	N56CZ	Enclosure	Drip Proof
Thermal Protection	Thermally Protected	Ambient Temperature	40 °C
UL	Recognized	CSA	Y
Number of Speeds	1		

Technical Specifications

Electrical Type	Capacitor Start, Induction Run, Single Or Dual Voltage	Poles	2
Rotation	Counterclockwise Pump End	Mounting	Special/Non-Standard
Motor Orientation	Horizontal	Drive End Bearing	Ball Brg
Opp Drive End Bearing	Ball	Frame Material	Rolled Steel
Shaft Type	1/2 THREADS	Overall Length	14.13 in
Frame Length	7.25 in	Shaft Diameter	0.665 in
Shaft Extension	3.82 in		
Outline Drawing	B625-S01	Connection Drawing	17050405.PCX

This is an uncontrolled document once printed or downloaded and is subject to change without notice. Date Created:11/28/2022



NAMEPLATE DATA	EXTERNAL CONNECTION DIAGRAM	NOTES
MODEL: 173840 CUST PN: B625 HP: 3/4 SF: 1.50 ROT: CCWPE RPM: 3450 TYPE: CS CODE: K FORM: FRAME: N 56 CZ VOLTS: 230/115 AMPS: SF 6.4/12.8 MAX AMPS: SF AMPS: PH: 1 HZ: 60 INS: B AMB: 40°C DUTY: CONT ENCLOSURE: DP THERMALLY PROTECTED	<p>LOW VOLTAGE: YEL/BLK 1 LINE, BLACK 2, ORANGE 3, BROWN 4, WHITE 5, YELLOW 6 LINE</p> <p>HIGH VOLTAGE: YEL/BLK 1 LINE, BROWN 2, BLACK 3, ORANGE 4 NON REVERSIBLE, WHITE 5, YELLOW 6 LINE</p>	<ol style="list-style-type: none"> FOR THREADED SHAFT EXTENSION MATING PARTS SHOULD BE RELIEVED ONE THREAD TO CLEAR FILLET. END PLAY NOT TO EXCEED .010 [0.25] MEASURED WITH NO THRUST. ALL DIMENSIONS SHOWN IN PARENTHESIS ARE REFERENCE DIMENSIONS. CTQ REQUIREMENT SEE EP000105-008 RoHS & REACH REQUIREMENT SEE EP000014. BX HOLE PLUG MAY BE EITHER METAL OR PLASTIC. MOTOR DOES NOT REQUIRE NON SVRS WARNING LABEL.

PERFORMANCE CURVE	APPROVED SAMPLE
17142711	0701613
UL COMPONENT	CSA
FILE# CCN# FILE# GUIDE#	
E14663 XEWR2 LR4642 4211-01	
CUSTOMER	DISTRIBUTION

CRITICAL TO QUALITY CHARACTERISTICS (CTQs) (P) PROCESS (E) ENGINEERING (A) APPLICATION (R) REGULATORY (L) LIFE	DRAWING REVISION: IN ECR-0216843 REVISION BY: HAIKUA ZHANG DATE: 04-09-2022 APPROVED BY: TRISTIA ZHAO DATE: 04-09-2022	TOLERANCES UNLESS OTHERWISE SPECIFIED DEC. INCH mm ANGLE .X ±0.02 [±0.5] .XX ±0.005 [±0.13] .XXX ±0.0005 [±0.013] REMOVE BURRS & BREAK SHARP EDGES .003/0.015 [0.08 .38] CORNER FILLETS .02 [5] MACHINED SURFACES 12/ INCH mm 32/ mm SHOWN IN [BRACKETS]	DRAWN BY: DATE: APPROVED BY: DATE: REFERENCE: THIRD ANGLE PROJECTION	Regal Beloit America, Inc. DESCRIPTION: MODEL- PFHP-56FR OUTLINE MATERIAL: _____ PROCESS/FINISH: _____ SIZE DWG NO: B625 SHEET 1
---	--	---	---	---